

Milking Systems for Cows

Keep efficiency high



MILKING SYSTEMS


Milkplan[®]
FARMING TECHNOLOGIES

Milking Systems for Cows

The MP Arkektron milking systems for cows by Milkplan fully meet the needs of modern livestock farming. They can be adapted to any space, ensuring easy entry and caging of the animals. They are manufactured according to the highest quality standards.

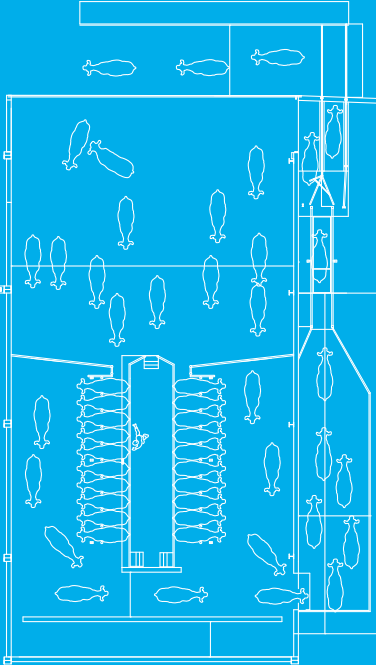
They can be combined with the most modern Afimilk electronic management equipment. The Afimilk electronic management can record and process various information on the herd, ensuring a complete and updated database.





MP Armektron Superb

Parallel



Operating characteristics

- Reduced entry-exit time of animals.
- Short distance per position for each animal for fast milking.
- Individual rotating door mechanism with return spring.
- Mechanism for adjustable positioning of animals in the milking position (anti-stress index).
- Electro-pneumatic entry and exit system for manual control from the pit.
- Suitable for big or pregnant animals.
- Easy access to the animal's udder.
- Time savings for the operator and easy cleaning.



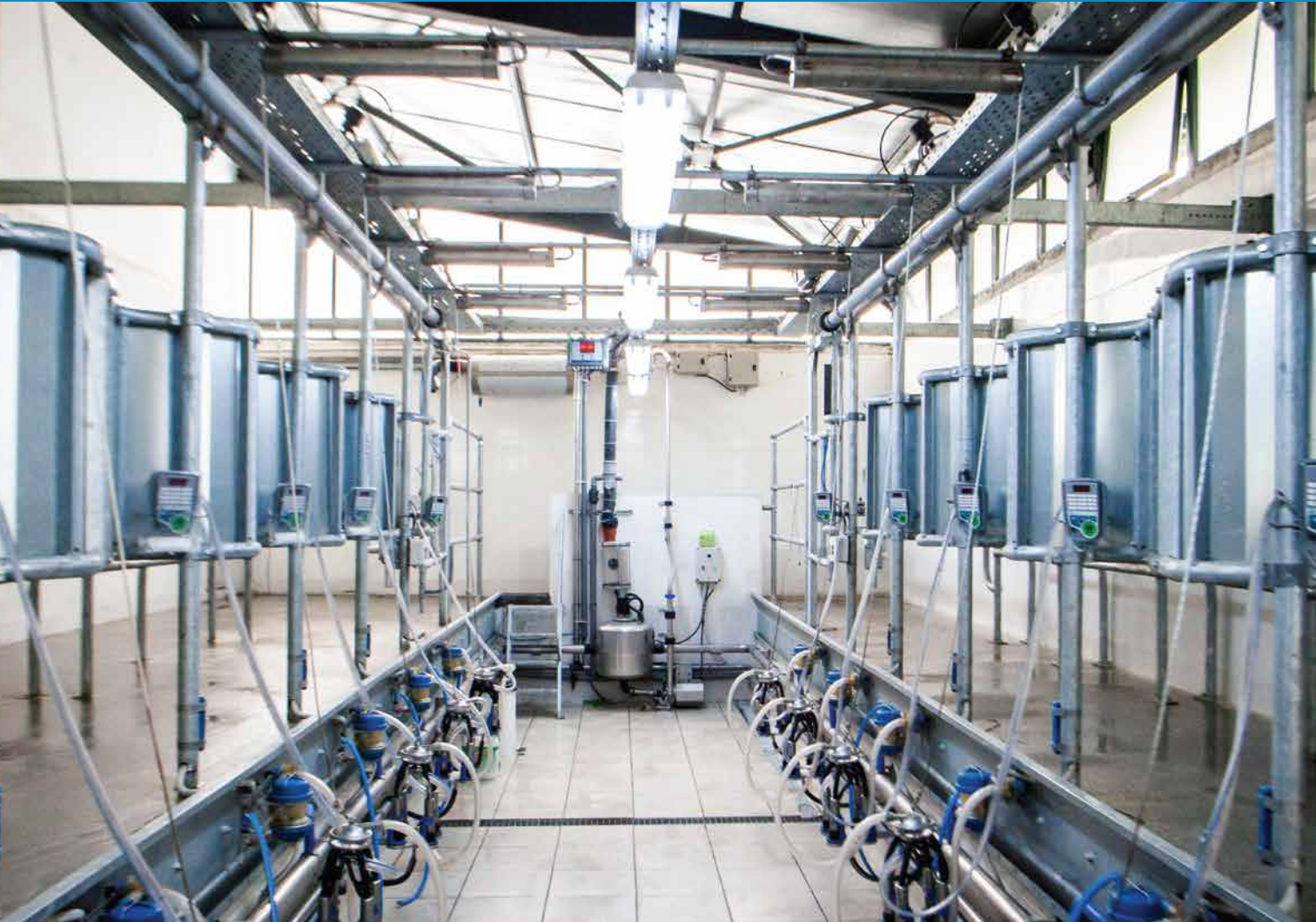
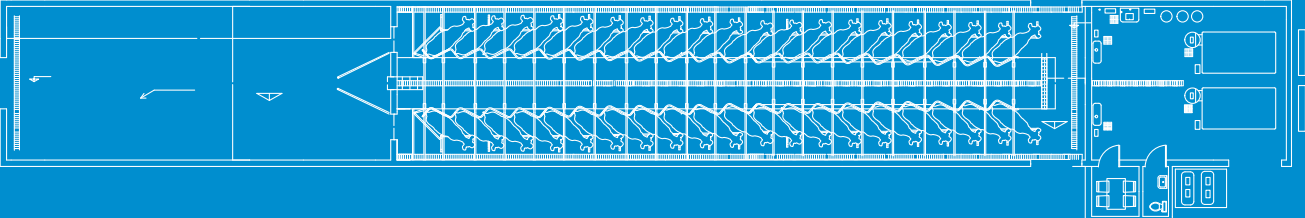
Technical specifications

- Sizes from 1x4 to 2x40.
- Robust construction made of stainless steel (DIN 1.4301, AISI 304) or hot-dip galvanized steel.
- Parallel pattern (90°).
- Stainless steel dung receiver (DIN 1.4301, AISI 304) with automatic solenoid valve and drainage for dirty water.
- Stainless steel (DIN 1.4301, AISI 304) 3mm-thick kick rail for the protection of the operator against possible kicks.
- Stainless steel cabinet for the control and protection of electronic and pneumatic equipment.



MP Armektron Dynamic

Herringbone





Operating characteristics

- Comfortable and easy entry-exit of the animals.
- Can be combined with the standard milking equipment or the full electronic herd management system.
- Easy access of the farmer to the udder for liner attachment.
- One of the most easy-to-use and efficient milking systems.
- Easy cleaning.



Technical specifications

- Sizes from 1x3 to 2x24.
- Robust construction made of hot-dip galvanized metal or stainless steel (DIN 1.4301, AISI 304).
- Herringbone pattern (320 ή 600).
- Kick rail made of 3mm-thick stainless steel (DIN 1.4301, AISI 304) or hot-dip galvanized sheet, for the protection of the operator against possible kicks.
- Reinforced adjustable 3mm-thick chest bar with a special base.
- Protective 2mm sheets per position for the protection of the operator.



Equipment

MP Armektron Superb & Dynamic Models



Technical specifications

- Triangular vented silicone or rubber liners, with a metal or plastic external cover.
- Vented or non-vented, 240cc or 350cc milk claws with an integrated shut-off function and separation cross (anti-cross contamination).
- Central stainless steel milk receiver, vertical or horizontal type, 60-100lt, three-phase or single-phase pump up to 2Hp and 620mm stainless steel filter.
- Anti-magnetic stainless steel (DIN 1,430, AISI 304) milk tubes.
- Anti-magnetic stainless steel (DIN 1.4301, AISI 304) or PVC washing tubes.
- PVC vacuum and pulsator tubes (10atm).
- High-durability, lubricated or dry vacuum pump unit with silencer and precision regulator up to 4,500 lt / min.
- High-precision electronic, waterproof pulsators.



Plus

- Use of a double milk tube on both sides and a double milk tank for large milking systems (larger than 2x12).
- Inverter MP Nautilus, available from 2.2kw to 15kw, for energy saving up to 40% and minimum noise reduction.
- Automatic liner removal.
- Electronic milk measurement and herd management.



Wash & Pulsation Control

MP Armektron 2 to 1 Pulse & Wash

The cleaning of the milking system is a prerequisite for high quality milk. The “MP Armektron 2 to 1 Pulse & Wash”, along with the full electronic pulsator control, ensures proper cleaning and shortens the washing process.



Technical specifications

- 2 in 1 system for automatic washing and control of pulsators 12/24V.
- Anti-magnetic stainless steel panel (DIN 1.4301, AISI 304).
- PLC software with ArmektronPlus program, in accordance with international standards.
- Language selection GR, EN, FR, RU, RO, ES etc.
- Washing tank 80-500lt, closed type, made of anti-magnetic stainless steel (DIN 1.4301, AISI 304) and protective cover.
- Terminal control switch to ensure position of the milk transfer tube.
- Electric drain excess-flow valve DN50 for direct evacuation of the tank from the wash water.
- Anti-magnetic stainless steel (DIN 1.4301, AISI 304) detergent dosage panel.
- High-precision, peristaltic pumps 24VDC, solenoid cold/hot water valves 24V 3/4" and acid-resistant tubes.
- User-friendly digital display and keyboard.



Operating characteristics

- Extra hot water supply option during washing.
- Automatic reset in case of power failure.
- Excellent adjustment precision in all 4 pulse phases (A, B, C, D).
- Control of two independent air inlet devices (air injector) for proper washing and air purge system for removal of milk.
- Different temperature and time selection, according to the detergent and chemical used in each cleaning process.
- Compatibility with all inverters.



Plus

Only for Armektron 6.0 system

- Two IP65 temperature sensors with malfunction alert.
- Hot water conservation during washing with inline heater system and a 12kw resistance.
- Automatic update for maintenance and replacement of accessories.





3rd km. Provincial road Lagada - Kolchiko
572 00 Lagadas, Thessaloniki Greece

T/F +30 23940 20400
E sales@milkipan.com

www.milkipan.com